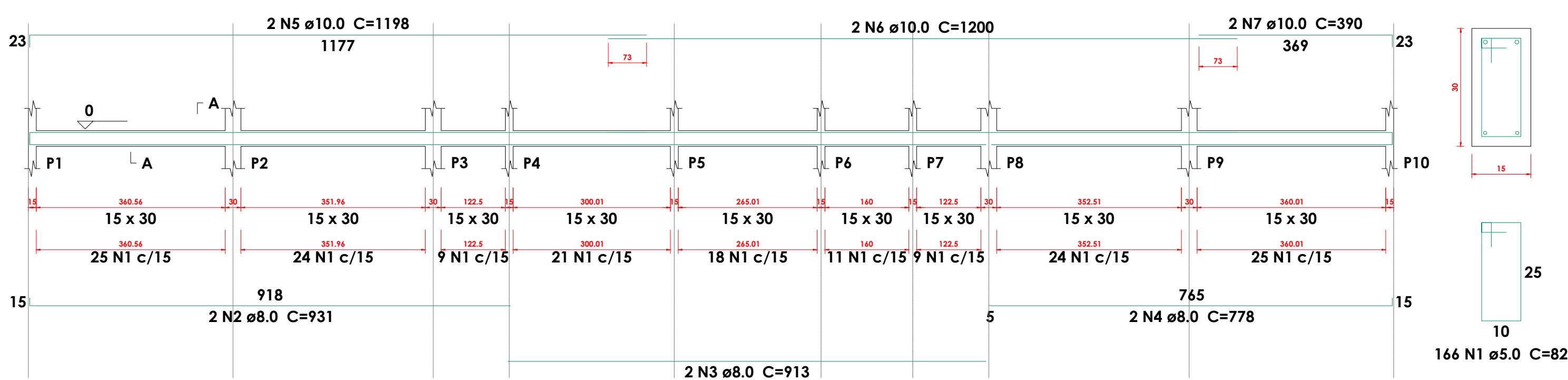
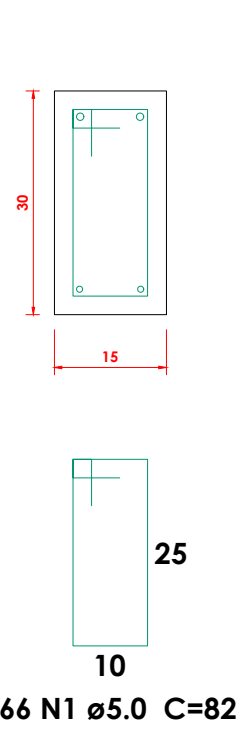
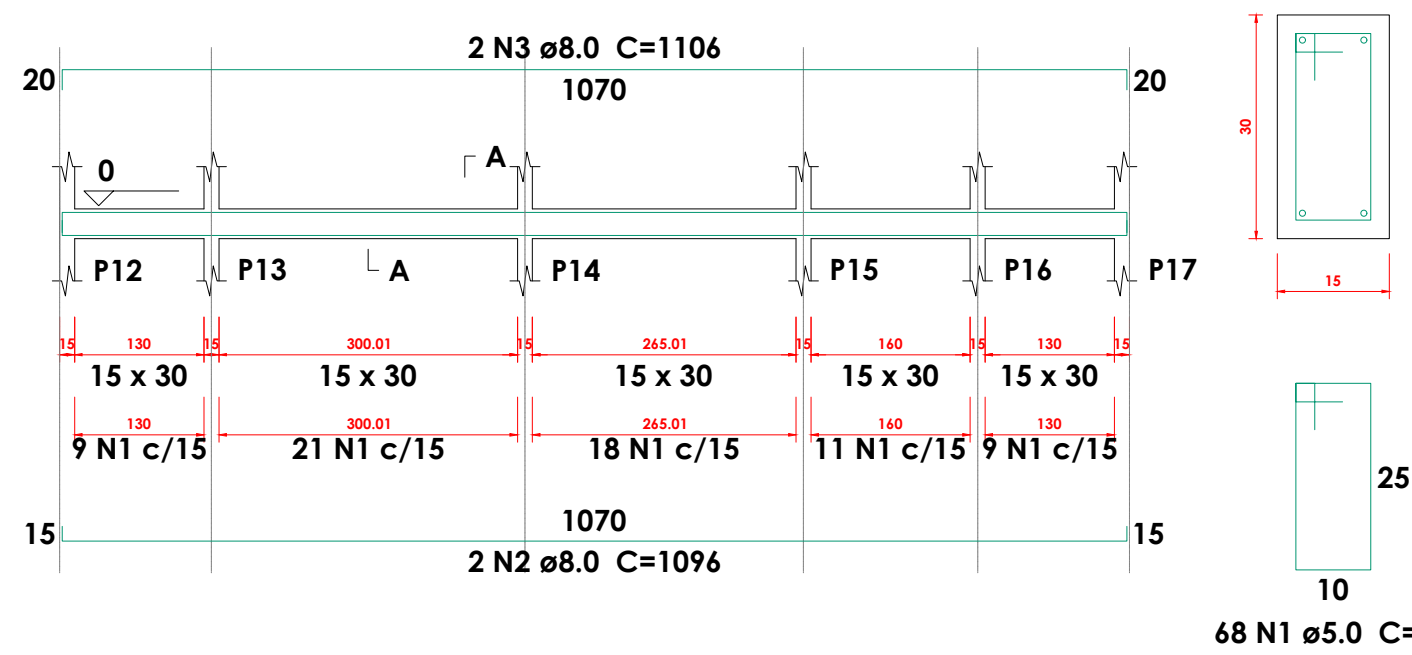
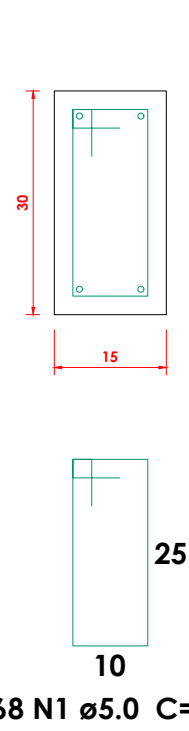
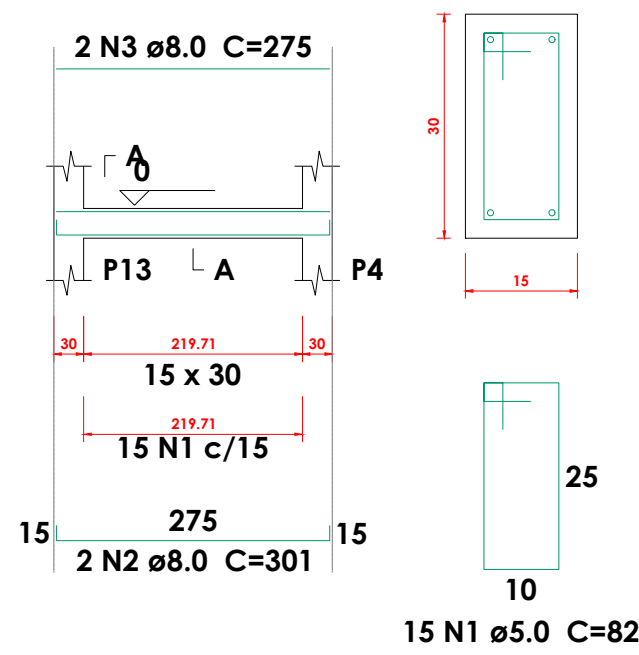
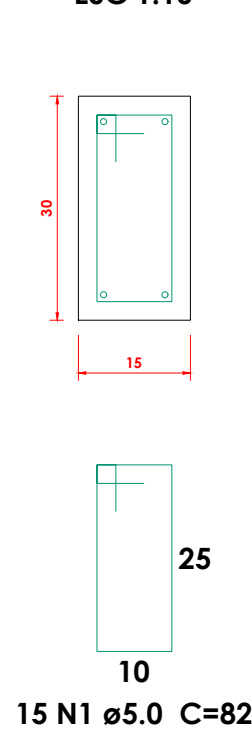
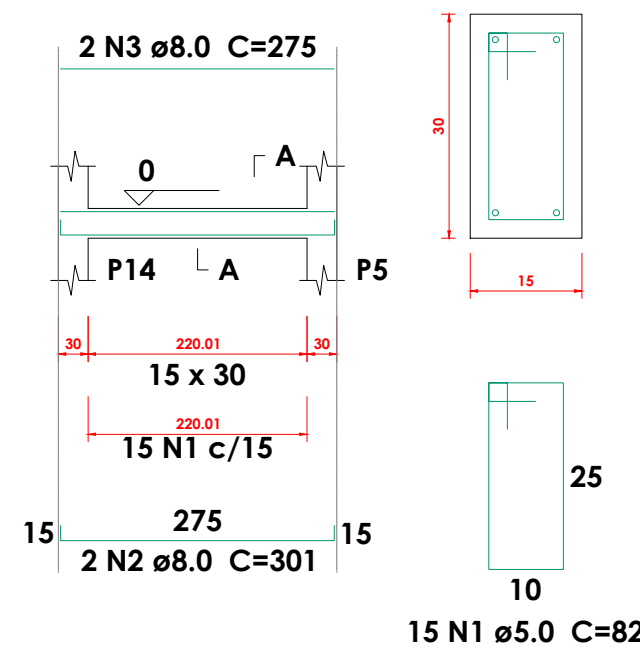
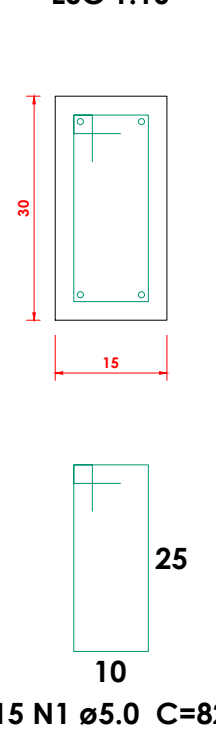
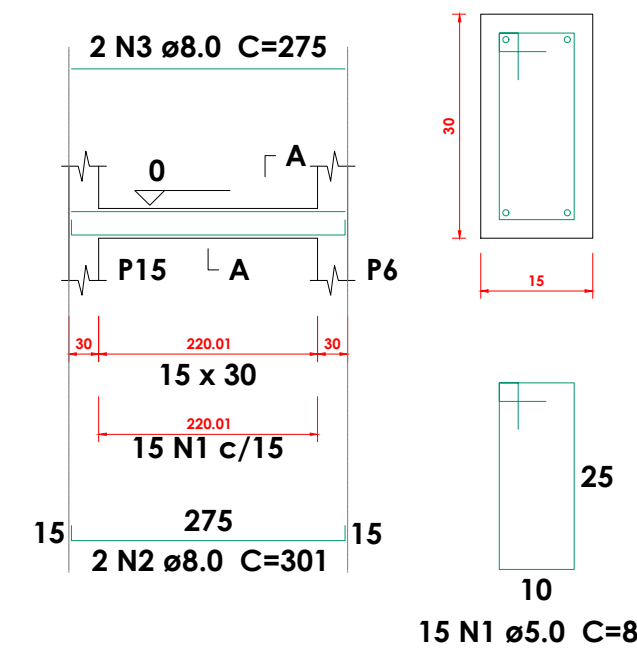
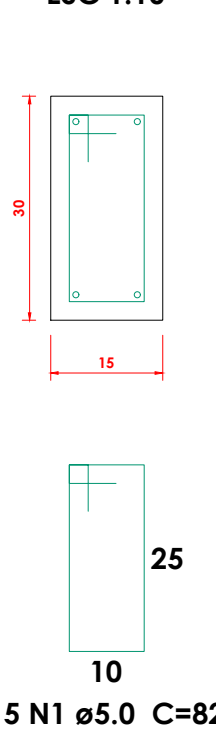
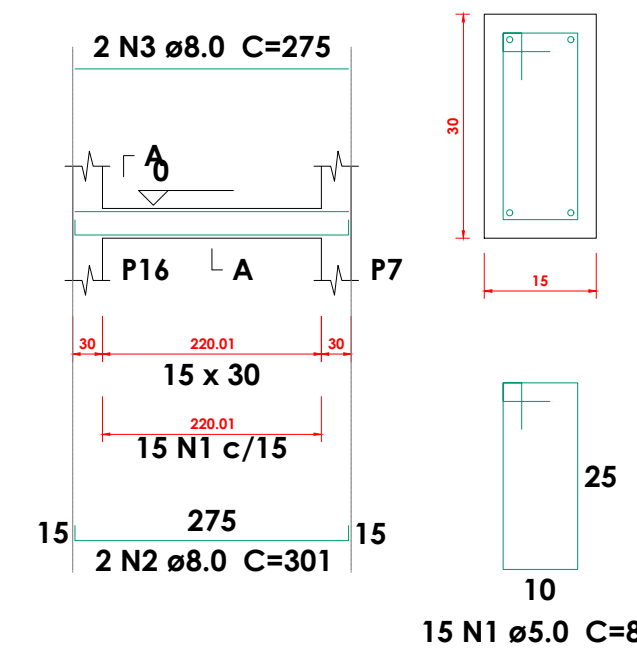
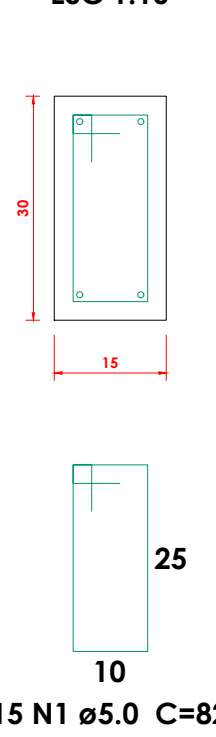
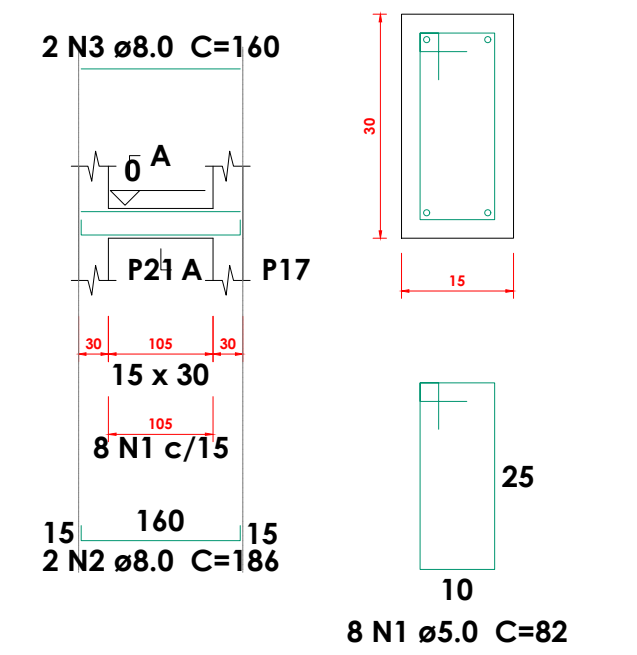
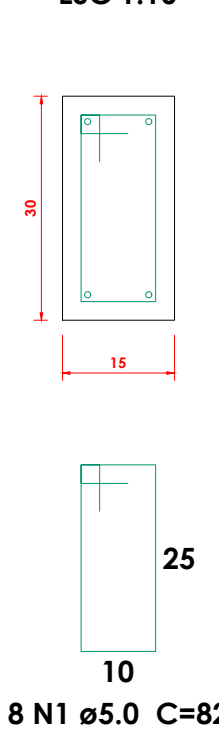
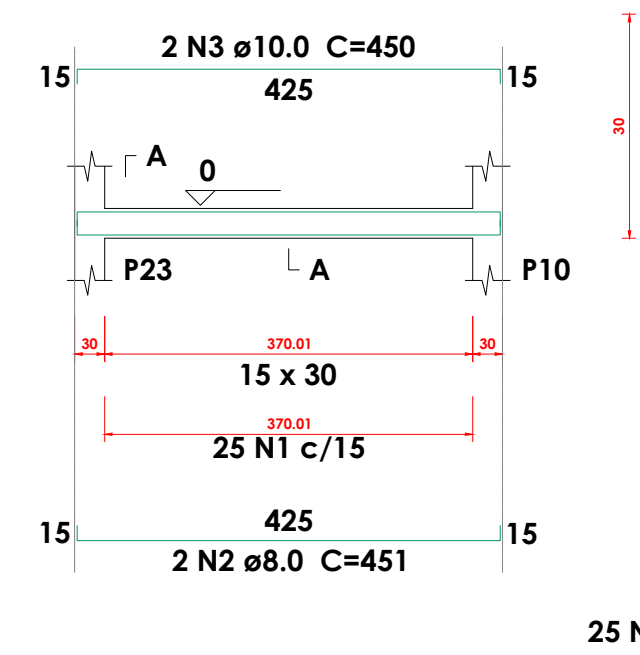
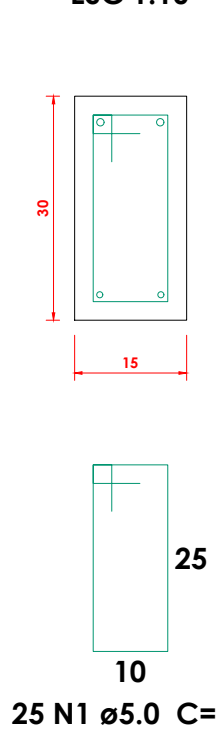
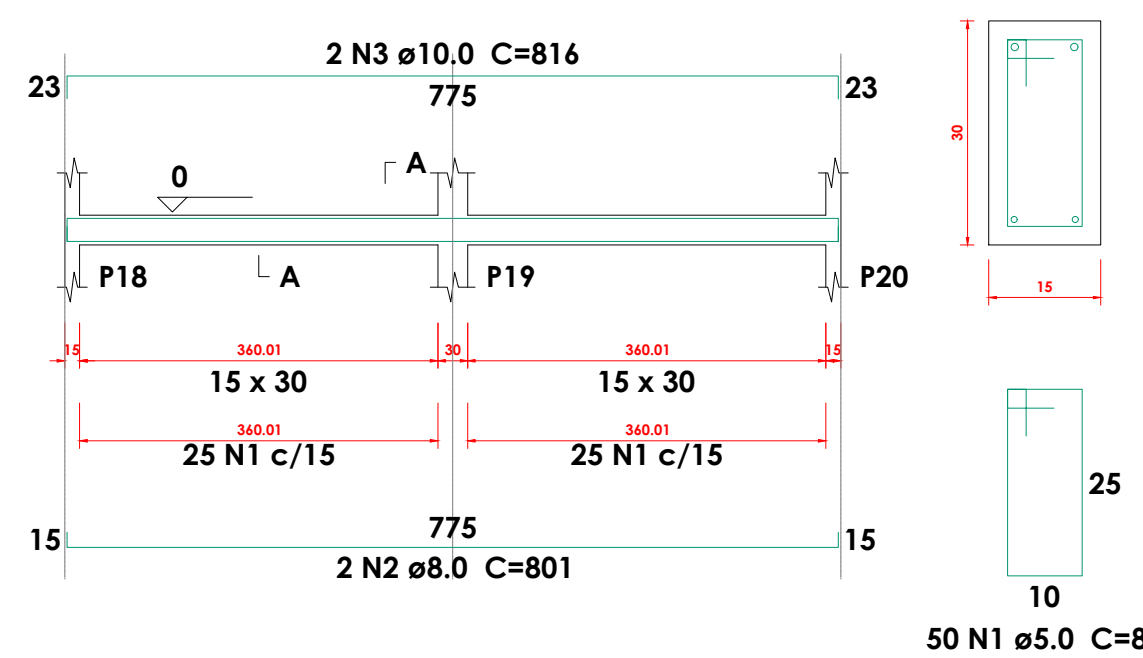
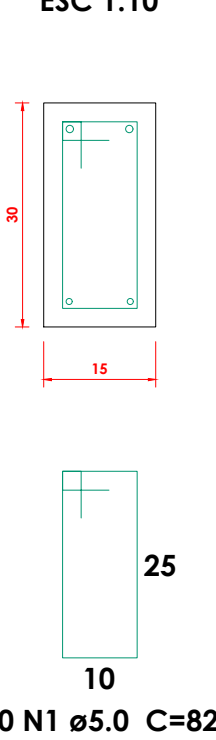
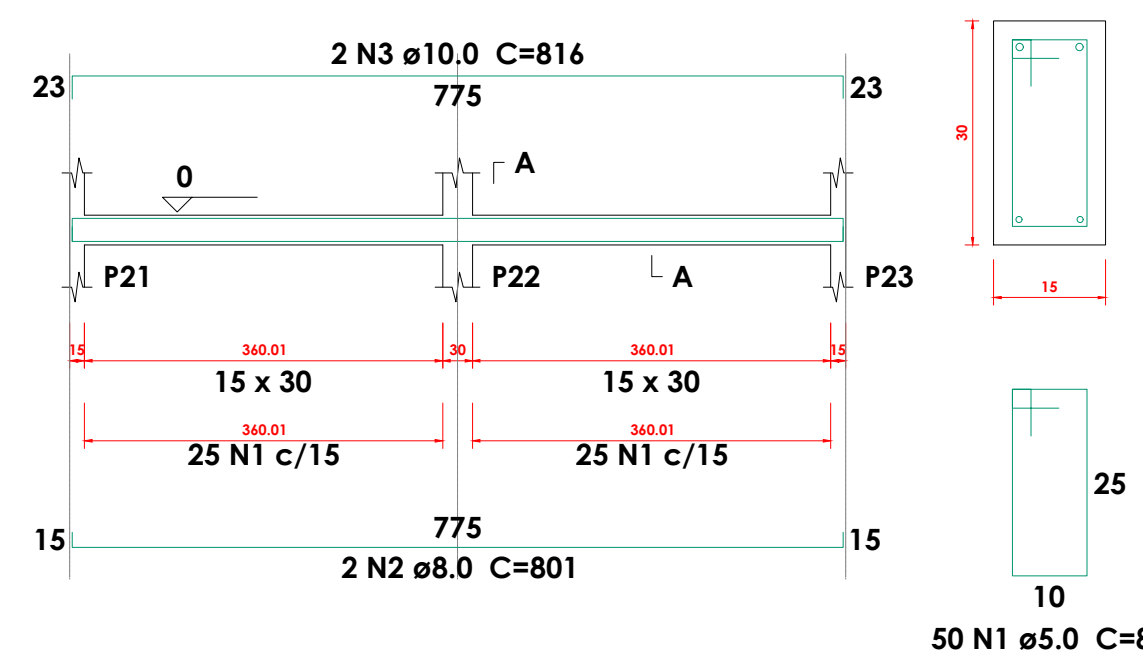
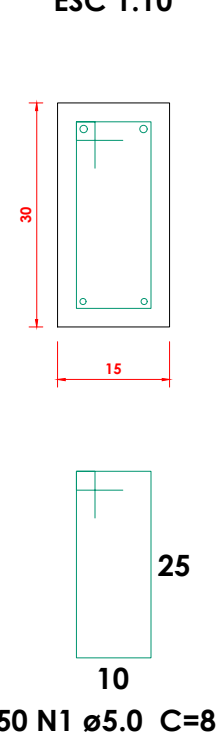
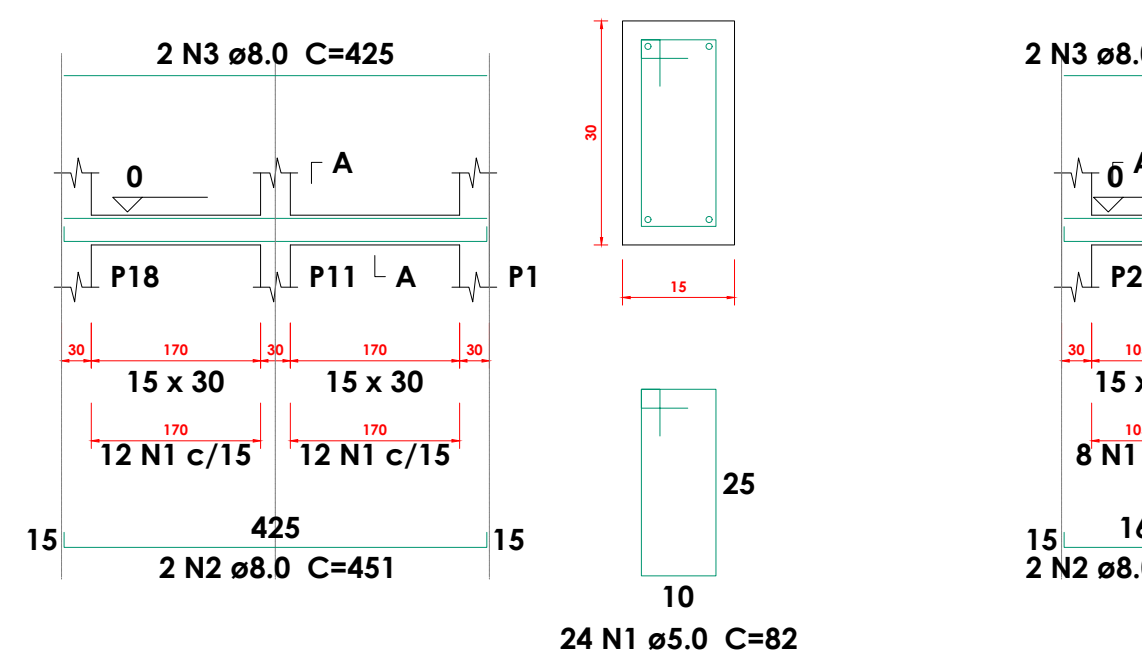
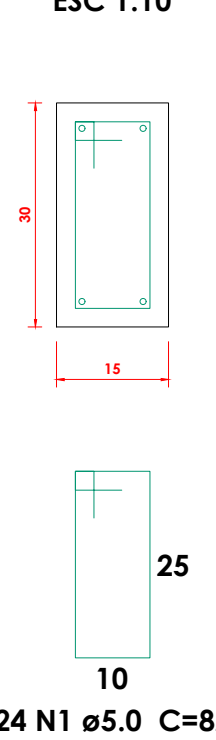
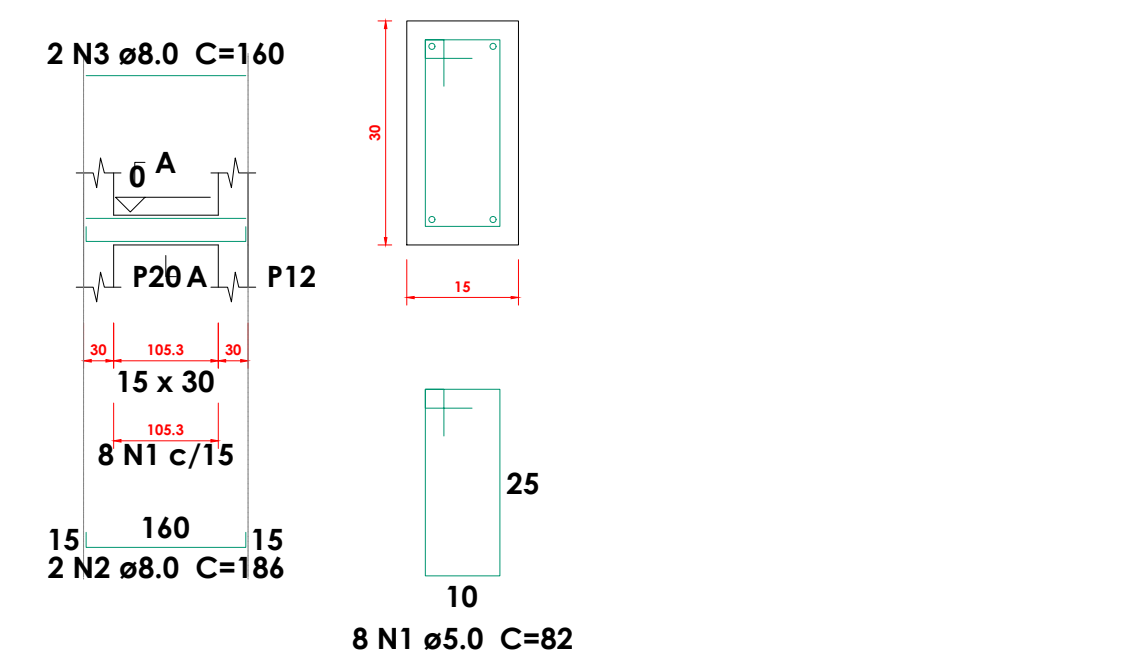
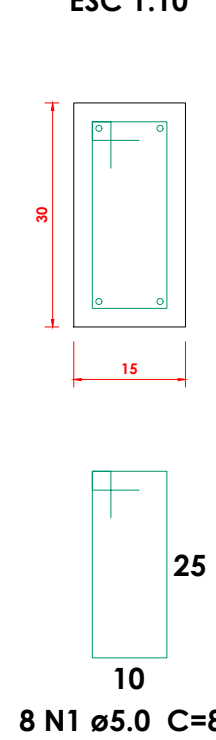
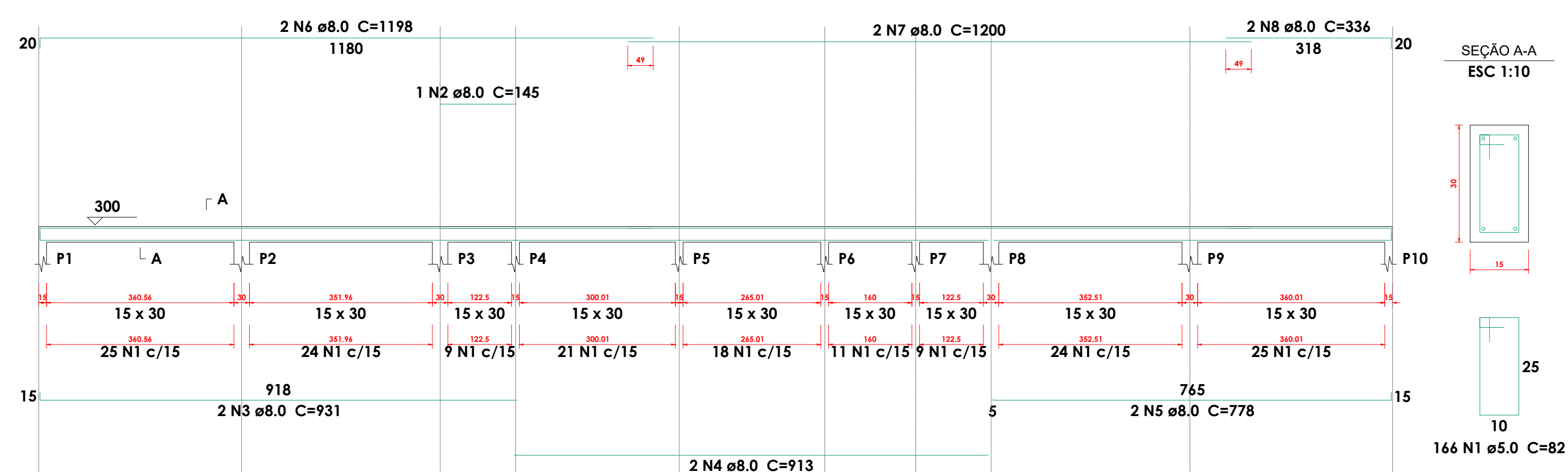
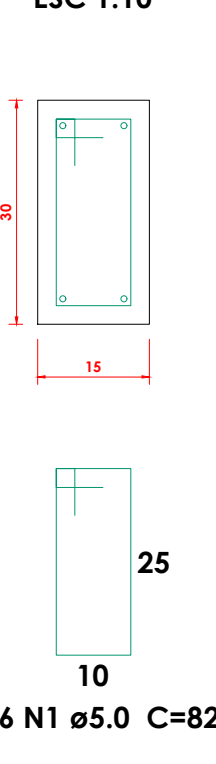
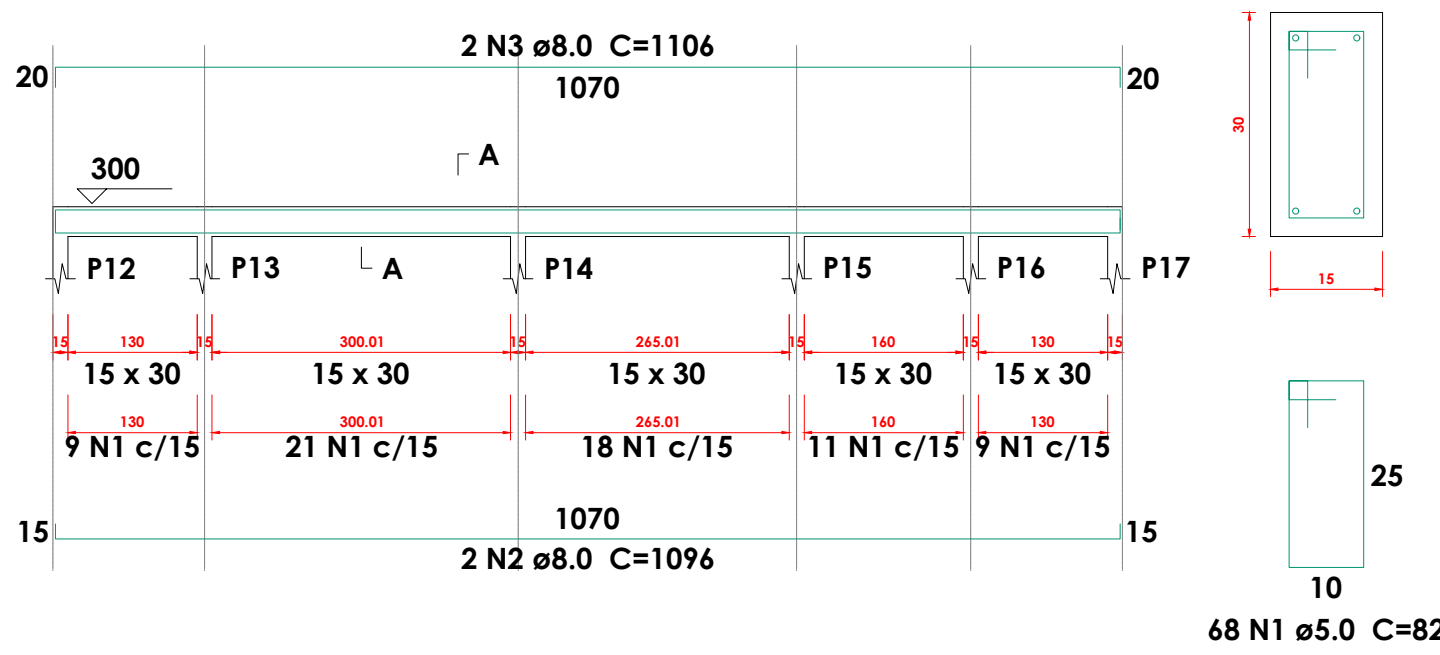
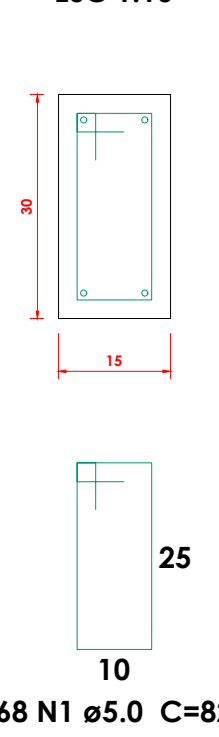
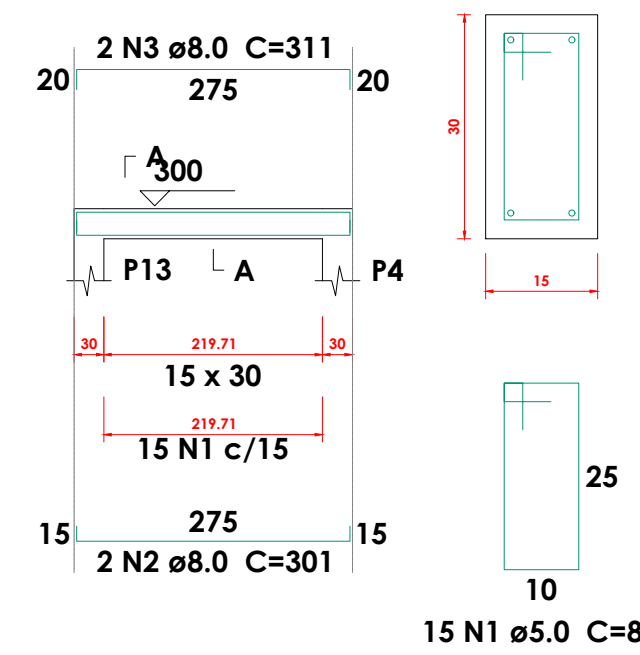
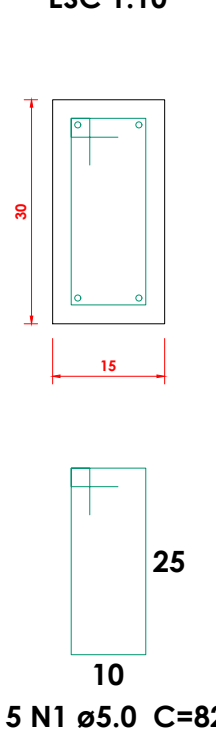
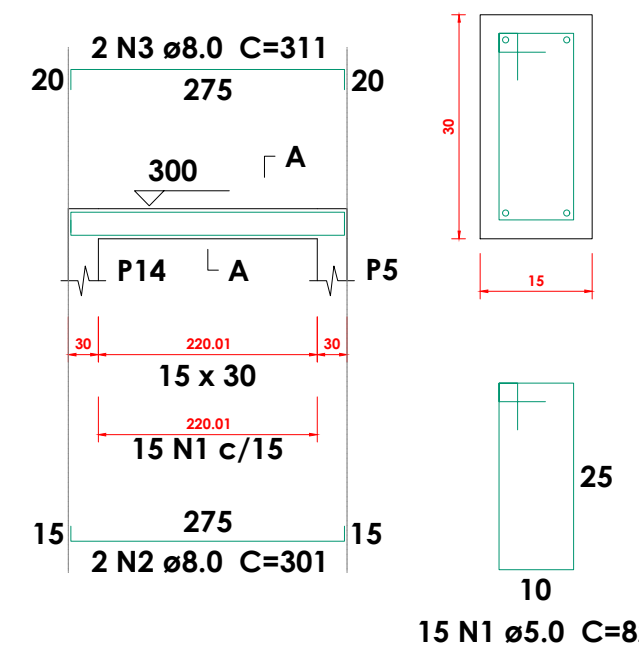
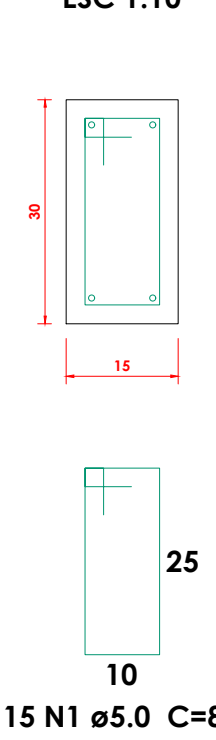
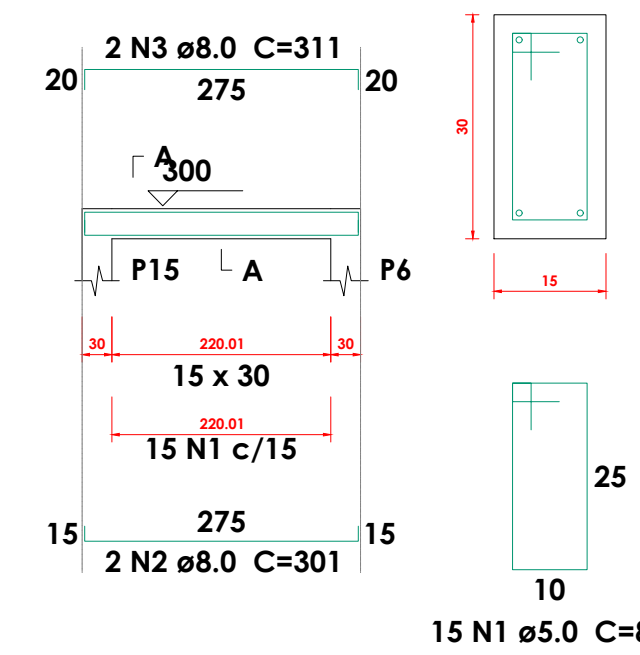
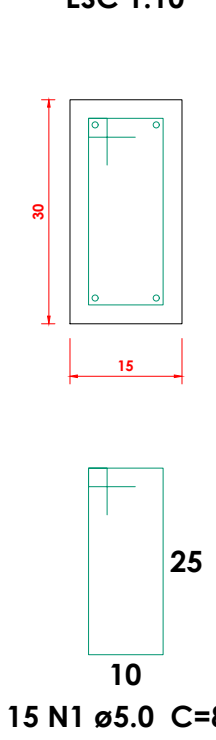
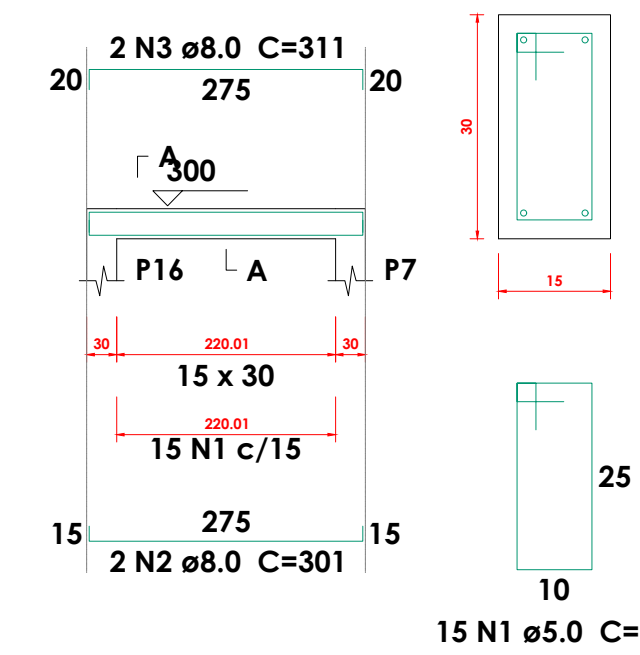
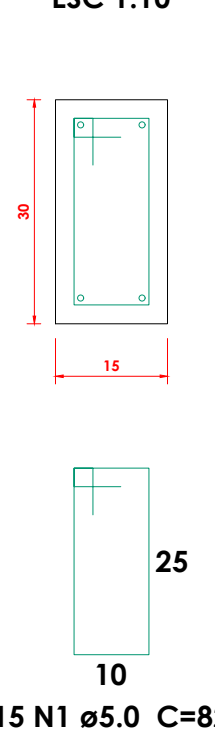
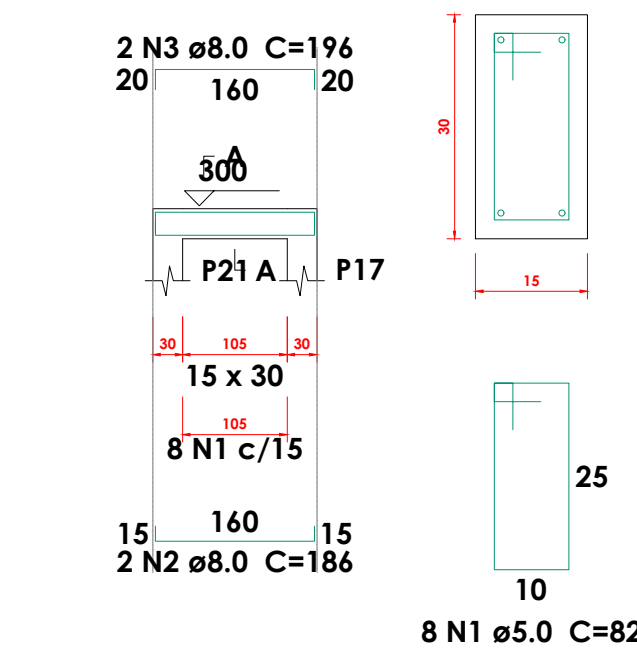
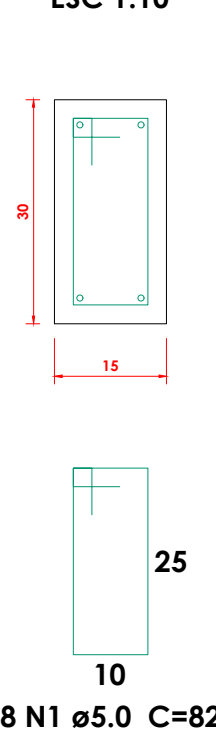
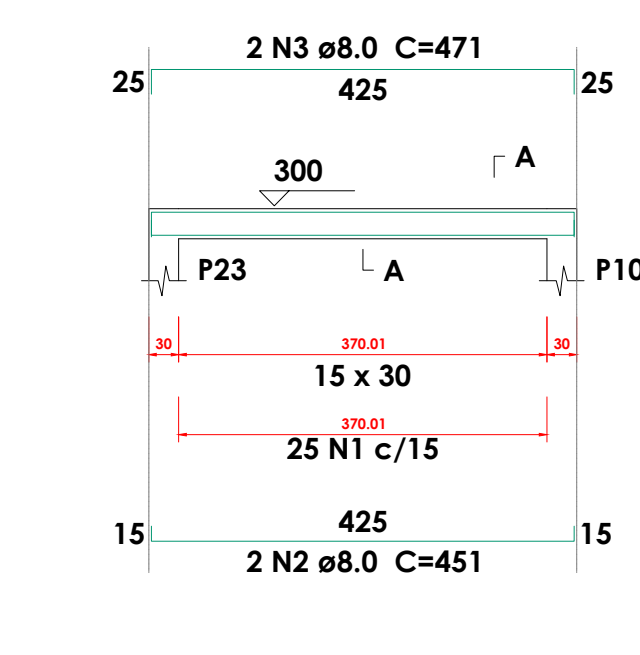
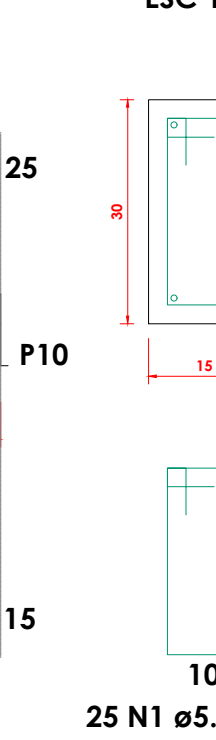
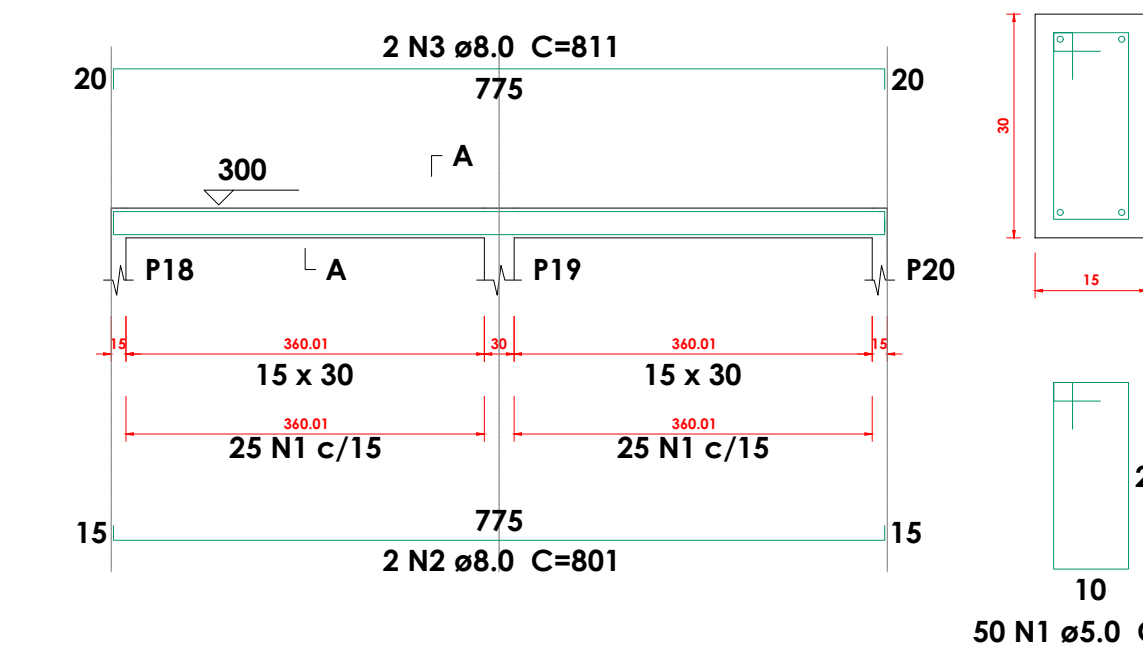
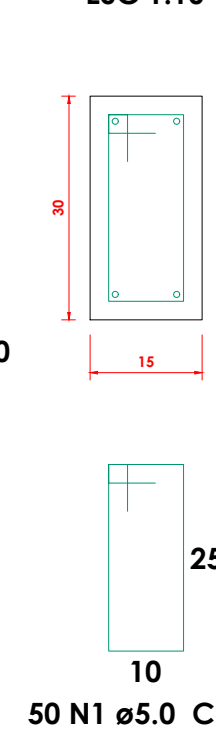
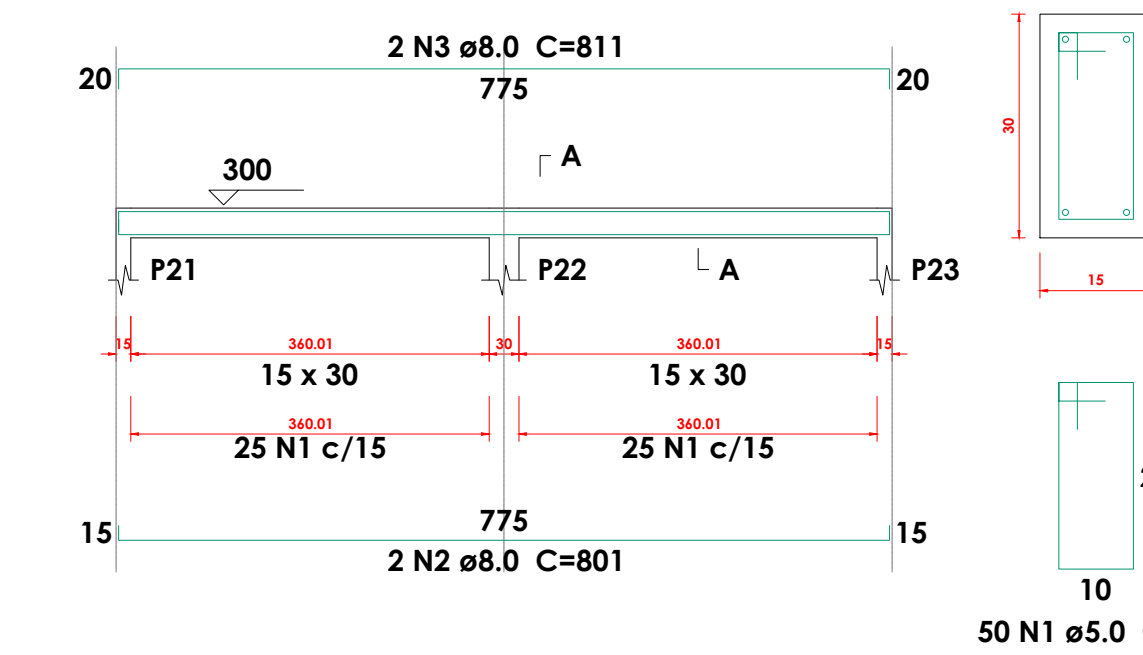
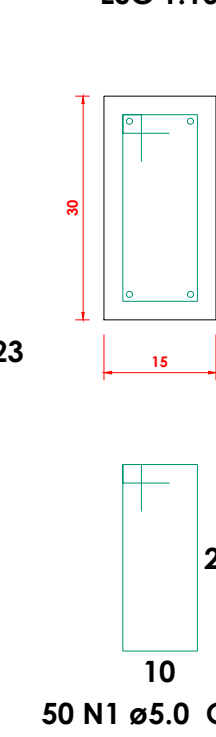
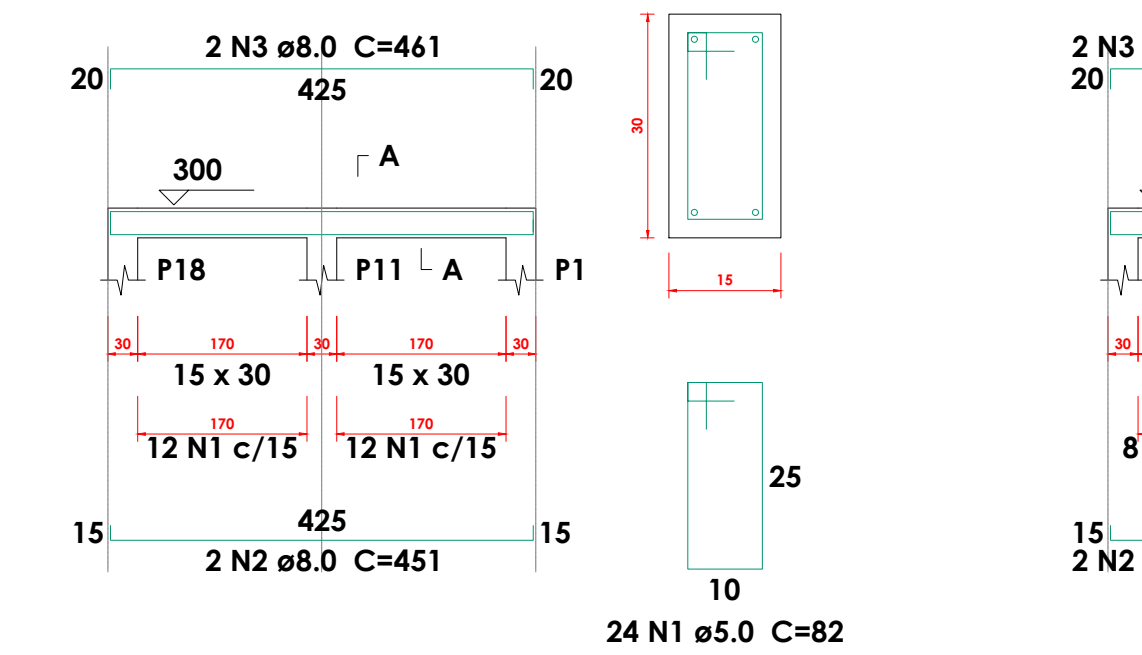
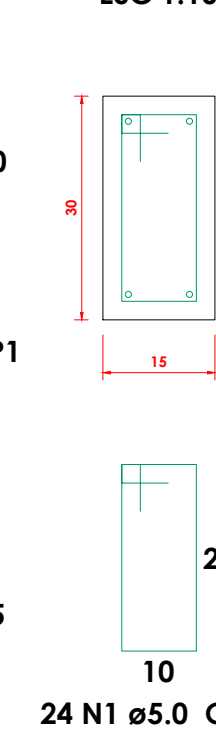
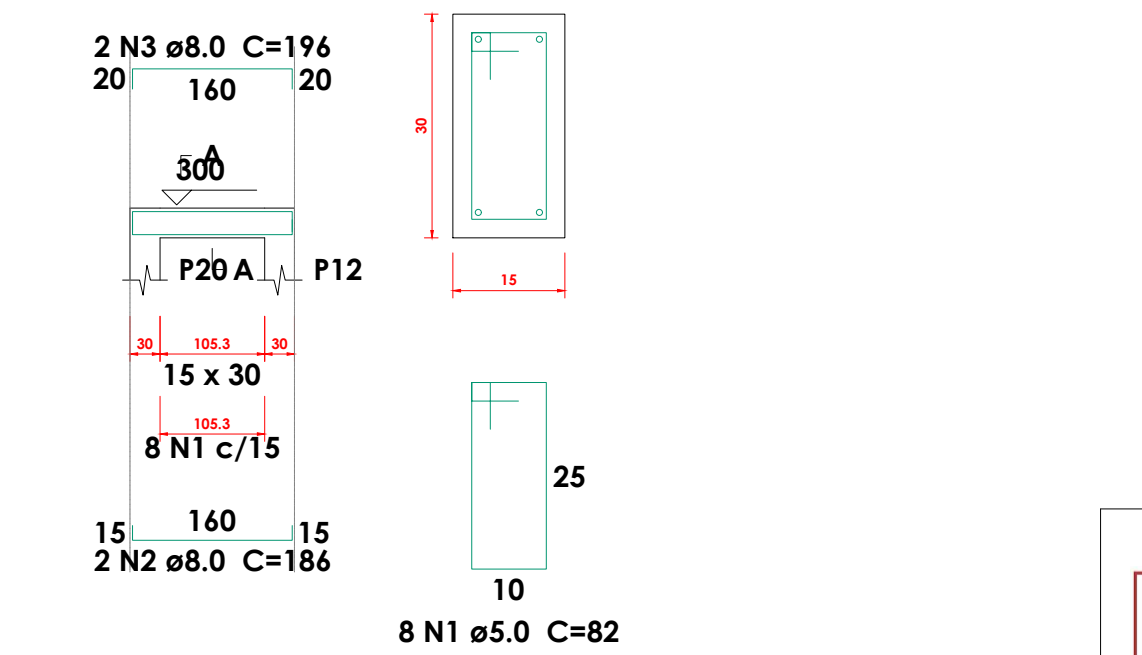
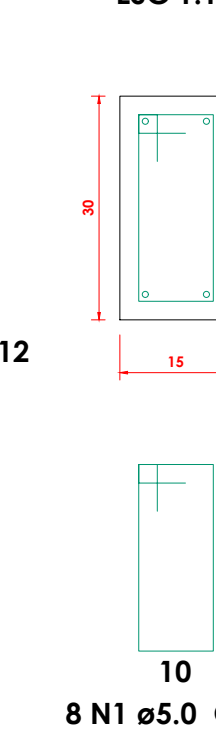


VB1  
ESC 1:75SEÇÃO A-A  
ESC 1:10VB2  
ESC 1:75SEÇÃO A-A  
ESC 1:10VB7  
ESC 1:75SEÇÃO A-A  
ESC 1:10VB8  
ESC 1:75SEÇÃO A-A  
ESC 1:10VB9  
ESC 1:75SEÇÃO A-A  
ESC 1:10VB10  
ESC 1:75SEÇÃO A-A  
ESC 1:10VB11  
ESC 1:75SEÇÃO A-A  
ESC 1:10VB12  
ESC 1:75SEÇÃO A-A  
ESC 1:10VB3  
ESC 1:75SEÇÃO A-A  
ESC 1:10VB4  
ESC 1:75SEÇÃO A-A  
ESC 1:10VB5  
ESC 1:75SEÇÃO A-A  
ESC 1:10VB6  
ESC 1:75SEÇÃO A-A  
ESC 1:10VA1  
ESC 1:75SEÇÃO A-A  
ESC 1:10VA2  
ESC 1:75SEÇÃO A-A  
ESC 1:10VA7  
ESC 1:75SEÇÃO A-A  
ESC 1:10VA8  
ESC 1:75SEÇÃO A-A  
ESC 1:10VA9  
ESC 1:75SEÇÃO A-A  
ESC 1:10VA10  
ESC 1:75SEÇÃO A-A  
ESC 1:10VA11  
ESC 1:75SEÇÃO A-A  
ESC 1:10VA12  
ESC 1:75SEÇÃO A-A  
ESC 1:10VA3  
ESC 1:75SEÇÃO A-A  
ESC 1:10VA4  
ESC 1:75SEÇÃO A-A  
ESC 1:10VA5  
ESC 1:75SEÇÃO A-A  
ESC 1:10VA6  
ESC 1:75SEÇÃO A-A  
ESC 1:10

Relação do aço

ELEMENTO	AÇO	N	DIAM	Q	UNIT (cm)	C.TOTAL (cm)
VB1	CA60	1	5.0	166	82	13612
	CA50	2	8.0	2	931	1862
	CA50	3	8.0	2	913	1826
	CA50	4	8.0	2	778	1556
	CA50	5	10.0	2	1198	2396
	CA50	6	10.0	2	1200	2400
	CA50	7	10.0	2	390	760
VB2	CA60	1	5.0	68	82	5576
	CA50	2	8.0	2	1096	2192
VB3	CA50	3	8.0	2	1106	2212
	CA60	1	5.0	50	82	4100
	CA50	2	8.0	2	801	1602
VB4	CA50	3	10.0	2	816	1632
	CA60	1	5.0	50	82	4100
VB5	CA50	2	8.0	2	801	1602
	CA50	3	10.0	2	816	1632
	CA60	1	5.0	24	82	1968
VB6	CA50	2	8.0	2	451	902
	CA50	3	8.0	2	425	850
	CA60	1	5.0	8	82	656
VB7	CA50	2	8.0	2	186	372
	CA50	3	8.0	2	160	320
	CA60	1	5.0	15	82	1230
VB8	CA50	2	8.0	2	301	602
	CA50	3	8.0	2	275	550
	CA60	1	5.0	15	82	1230
VB9	CA50	2	8.0	2	301	602
	CA50	3	8.0	2	275	550
	CA60	1	5.0	15	82	1230
VB10	CA50	2	8.0	2	301	602
	CA50	3	8.0	2	275	550
	CA60	1	5.0	8	82	656
VB11	CA50	2	8.0	2	186	372
	CA50	3	8.0	2	160	320
	CA60	1	5.0	25	82	2050
VB12	CA50	2	8.0	2	451	902
	CA50	3	10.0	2	450	900

Resumo do aço

AÇO	DIAM	C.TOTAL (m)	PESO (kg)
CA50	8.0	215	84.8
CA50	10.0	97.4	60.1
CA60	5.0	376.4	58
PESO TOTAL			
CA50	144.9		
CA60	58		

Vol. de concreto total (C-25) = 3.4 m³  
Área de forma total = 56.63 m²

Relação do aço

ELEMENTO	AÇO	N	DIAM	Q	UNIT (cm)	C.TOTAL (cm)
VA1	CA60	1	5.0	166	82	13612
	CA50	2	8.0	1	145	145
	CA50	3	8.0	2	931	1862
	CA50	4	8.0	2	913	1826
	CA50	5	8.0	2	778	1556
	CA50	6	8.0	2	1198	2396
	CA50	7	8.0	2	1200	2400
VA2	CA50	8	8.0	2	336	672
	CA60	1	5.0	68	82	5576
VA3	CA50	2	8.0	2	1096	2192
	CA50	3	8.0	2	1106	2212
	CA60	1	5.0	50	82	4100
VA4	CA50	2	8.0	2	801	1602
	CA50	3	8.0	2	811	1622
	CA60	1	5.0	50	82	4100
VA5	CA50	2	8.0	2	801	1602
	CA50	3	8.0	2	811	1622
	CA60	1	5.0	24	82	1968
VA6	CA50	2	8.0	2	451	902
	CA50	3	8.0	2	461	922
	CA60	1	5.0	8	82	656
VA7	CA50	2	8.0	2	186	372
	CA50	3	8.0	2	196	392
	CA60	1	5.0	15	82	1230
VA8	CA50	2	8.0	2	301	602
	CA50	3	8.0	2	311	622
	CA60	1	5.0	15	82	1230
VA9	CA50	2	8.0	2	301	602
	CA50	3	8.0	2	311	622
	CA60	1	5.0	15	82	1230
VA10	CA50	2	8.0	2	301	602
	CA50	3	8.0	2	311	622
	CA60	1	5.0	15	82	1230
VA11	CA50	2	8.0	2	301	602
	CA50	3	8.0	2	311	622
	CA60	1	5.0	8	82	656
VA12	CA50	2	8.0	2	186	372
	CA50	3	8.0	2	196	392
	CA60	1	5.0	25	82	2050
VA12	CA50	2	8.0	2	451	902
	CA50	3	8.0	2	471	942

Resumo do aço

AÇO	DIAM	C.TOTAL (m)	PESO (kg)
CA50	8.0	318.1	125.5
CA60	5.0	376.4	58
PESO TOTAL			
CA50	125.5		
CA60	58		

Vol. de concreto total (C-25) = 3.4 m³  
Área de forma total = 56.63